



# LEWIS C. CASSIDY ACADEMICS PLUS SCHOOL

## 2021-22 SCHOOL PROGRESS REPORT ON EDUCATION AND EQUITY

School Code | 4240 Sector | District Network | Network 2  
Principal Name | Mrs Tangela Mcclam  
Address | 1625 N 76th St  
Phone | 215-400-7510 Website | cassidy.philasd.org/  
Report Type | K-8 School Grades in Report | K-8  
Admissions Category | Neighborhood  
Turnaround Model | N/A  
Receives HS Report | No  
Oct 1 Enrollment | 262

### Student Enrollment and Demographics



- 0.4% American Indian / Alaskan Native
- 0.0% Asian
- 90.1% Black / African American
- 6.1% Hispanic / Latino
- 2.3% Multi Racial / Other
- 0.0% Native Hawaiian / Pacific Islander
- 1.1% White

**314**

Total Number of Students Served for  
10+ Days Over the Year

**21.8%**

% Students with IEPs

**6.5%**

% English Learners

**87.0%**

% Economically Disadvantaged

### Student Attendance

**68.5%**

% Students Attending at Least 95%  
of Instructional Days

**77.1%**

% Students Attending at Least 90%  
of Instructional Days

Score Level	Performance	Improvement	Level
<b>Level 5</b>			
<b>Performance</b> <i>At or Above Target in</i> <b>11.1 %</b> 1 out of 9 Eligible Metrics			
<b>Improvement</b> Insufficient Data for Score			
<b>Goal Performance (All Students)</b>			
<b>GOAL 1   PSSA ELA % of Students Proficient or Advanced (Grades 3-8)</b> <b>Score: 23.0 %</b> -19.5 pts from 2021-2022 target <b>NOT MEETING</b> no data prior year			
<b>GOAL 2   PSSA ELA % of Students Proficient or Advanced (Grade 3)</b> <b>Score: 21.4 %</b> -17.9 pts from 2021-2022 target <b>NOT MEETING</b> no data prior year			
<b>GOAL 3   PSSA Math % of Students Proficient or Advanced (Grades 3-8)</b> <b>Score: 5.4 %</b> -23.3 pts from 2021-2022 target <b>NOT MEETING</b> no data prior year			
● Meeting Target ● Not Meeting Target			
	<b>American Indian / Alaskan Native</b> Insufficient Data for Score	Insufficient Data for Score	
	<b>Asian</b> Insufficient Data for Score	Insufficient Data for Score	
	<b>Black / African American</b> Insufficient Data for Score	Insufficient Data for Score	
	<b>Hispanic / Latino</b> Insufficient Data for Score	Insufficient Data for Score	
	<b>Multi Racial / Other</b> Insufficient Data for Score	Insufficient Data for Score	
	<b>Native Hawaiian / Pacific Islander</b> Insufficient Data for Score	Insufficient Data for Score	
	<b>White</b> Insufficient Data for Score	Insufficient Data for Score	
	<b>English Learners</b> Insufficient Data for Score	Insufficient Data for Score	
	<b>Students with IEPs</b> Insufficient Data for Score	Insufficient Data for Score	
	<b>Economically Disadvantaged</b> Insufficient Data for Score	Insufficient Data for Score	

# Reading/ELA: Every Student Reads On or Above Grade Level

## Goal 1 - Reading Grades 3-8

School Code | 4240 School Name | Lewis C. Cassidy Academics Plus School

**Goal 1:** The percentage of students in grades 3-8 who are proficient on the state ELA assessment will grow from 35.7% in August 2019 to 65.0% by August 2026

### PSSA ELA: % of Students Proficient or Advanced, Grades 3-8

**All Students, 135 students**

**Score: 23.0 %**



**2021-2022 Target: 42.5 %**

*-19.5 pts from target*

**2025-2026 Goal: 65.0 %**

*-42.0 pts from target*

NOT MEETING

no data prior year



- Meeting Target
- Not Meeting Target

**American Indian / Alaskan Native**

Insufficient Sample

**Asian**

Insufficient Sample

**Black / African American, 120 students**

**Score: 20.8 %**  
*-21.7 pts from target*

NOT MEETING

no data prior year



**Hispanic / Latino**

Insufficient Sample

**Multi Racial / Other**

Insufficient Sample

**Native Hawaiian / Pacific Islander**

Insufficient Sample

**White**

Insufficient Sample

**English Learners**

Insufficient Sample

**Students with IEPs, 28 students**

**Score: 35.7 %**  
*-6.8 pts from target*

NOT MEETING

no data prior year



**Economically Disadvantaged, 112 students**

**Score: 20.5 %**  
*-22.0 pts from target*

NOT MEETING

no data prior year



# Reading/ELA: Every Student Reads On or Above Grade Level

## Goal 2 - Reading Grade 3

School Code | 4240 School Name | Lewis C. Cassidy Academics Plus School

**Goal 2:** The percentage of 3rd grade students who are proficient on the state ELA assessment will grow from 32.5% in August 2019 to 62.0% by August 2026

### PSSA ELA: % of Students Proficient or Advanced, Grade 3

All Students, 28 students

Score: 21.4 %



2021-2022 Target: 39.3 %

-17.9 pts from target

2025-2026 Goal: 62.0 %

-40.6 pts from target

NOT MEETING

no data prior year



- Meeting Target
- Not Meeting Target

American Indian / Alaskan Native

Insufficient Sample

Asian

Insufficient Sample

Black / African American, 23 students

Score: 21.7 %  
-17.6 pts from target

NOT MEETING

no data prior year



Hispanic / Latino

Insufficient Sample

Multi Racial / Other

Insufficient Sample

Native Hawaiian / Pacific Islander

Insufficient Sample

White

Insufficient Sample

English Learners

Insufficient Sample

Students with IEPs

Insufficient Sample

Economically Disadvantaged, 26 students

Score: 19.2 %  
-20.1 pts from target

NOT MEETING

no data prior year



# Math & Science: Every Student Performs On or Above Grade Level

## Goal 3 - Math Grades 3-8

School Code | 4240 School Name | Lewis C. Cassidy Academics Plus School

**Goal 3:** The percentage of students in grades 3-8 who are proficient on the state Math assessment will grow from 21.6% in August 2019 to 52.0% by August 2026

### PSSA Math: % Students Proficient or Advanced, Grades 3-8

All Students, 148 students

Score: **5.4 %**



2021-2022 Target: **28.7 %**

-23.3 pts from target

2025-2026 Goal: **52.0 %**

-46.6 pts from target

NOT MEETING

no data prior year



### PSSA Science

% of Students Proficient or Advanced in Science (Grades 4 and 8)

**30.8 %**

12 out of 39 students

American Indian / Alaskan Native

Insufficient Sample

Asian

Insufficient Sample

Black / African American, 133 students

Score: **3.0 %**

-25.7 pts from target

NOT MEETING

no data prior year



Hispanic / Latino

Insufficient Sample

Multi Racial / Other

Insufficient Sample

Native Hawaiian / Pacific Islander

Insufficient Sample

White

Insufficient Sample

English Learners

Insufficient Sample

Students with IEPs, 33 students

Score: **15.2 %**

-13.5 pts from target

NOT MEETING

no data prior year



Economically Disadvantaged, 125 students

Score: **4.8 %**

-23.9 pts from target

NOT MEETING

no data prior year



# Climate, Culture & Opportunity

## Guardrail 1 - Welcoming and Supportive Schools

School Code | 4240 School Name | Lewis C. Cassidy Academics Plus School

**Guardrail 1:** Every school will be a safe, welcoming and healthy place where our students, staff and community want to be and learn each day. This means that our schools will be: 1) environmentally safe and clean; and 2) spaces with inclusive climates that provide students with access to robust social, emotional, and mental health supports.

### School Climate Score

Score: 5.8



2021-2022 Target: 7.0  
-1.2 pts from target

2025-2026 Goal: 7.0  
-1.2 pts from target

NOT MEETING

no data prior year



### School Climate Survey

5.9/10  
Student Rating

8.0/10  
Parent Rating

5.2/10  
Teacher Rating

### School Instruction Score

Score: 7.2



2021-2022 Target: 8.0  
-0.8 pts from target

2025-2026 Goal: 8.0  
-0.8 pts from target

NOT MEETING

no data prior year



### School Instruction Survey

7.2/10  
Student Rating

7.1/10  
Parent Rating

7.3/10  
Teacher Rating

- Meeting Target
- Not Meeting Target



Yes

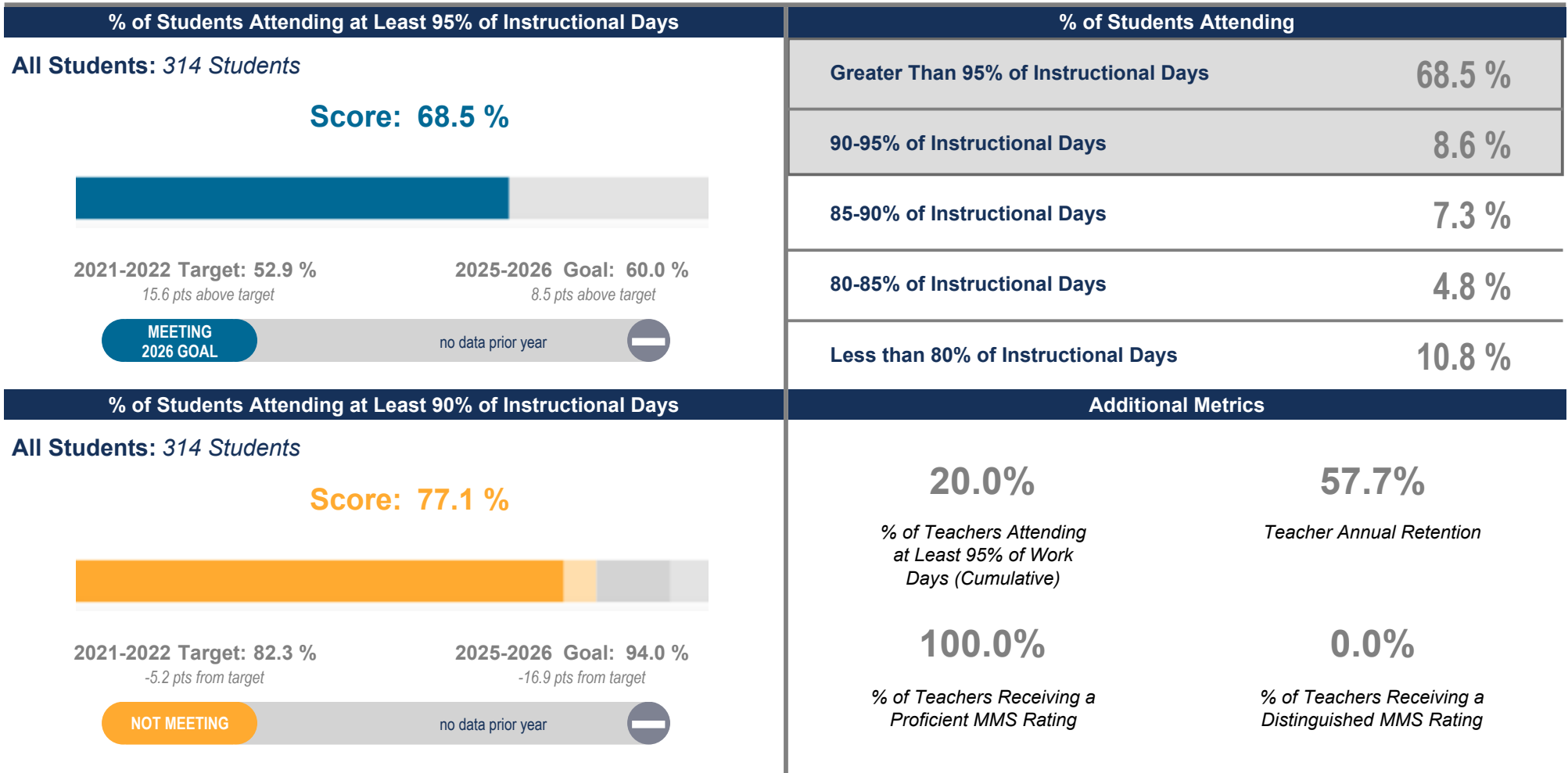
School Has at Least 2 Behavioral/Mental Health Support FTEs per 500 Students

# Climate, Culture & Opportunity

## Guardrail 1 - Welcoming and Supportive Schools

School Code | 4240 School Name | Lewis C. Cassidy Academics Plus School

**Guardrail 1:** Every school will be a safe, welcoming and healthy place where our students, staff and community want to be and learn each day. This means that our schools will be: 1) environmentally safe and clean; and 2) spaces with inclusive climates that provide students with access to robust social, emotional, and mental health supports.



- Meeting Target
- Not Meeting Target

# Climate, Culture & Opportunity

## Guardrail 2 - Enriching and Well-rounded School Experiences

## Guardrail 3 - Partnering with Parents / Family Members

School Code | 4240 School Name | Lewis C. Cassidy Academics Plus School

**Guardrail 2:** Every student will have a well-rounded education with co-curricular opportunities, including arts and athletics, integrated into the school experience.

**Guardrail 3:** Every parent and guardian will be welcomed and encouraged to be partners in their child's school community.

### % of Students Participating in Visual / Performing Arts

% of Students  
Participating in Visual /  
Performing Arts

96.1 %

221 out of 230 students

### School Relationship Score

Score: 7.6



2021-2022 Target: 8.0

-0.4 pts from target

NOT MEETING

no data prior year

### Additional Metrics



Yes

School Has a SAC/Parent Advisory Group



Yes

School Has a SAC/Parent Advisory Group That Meets Regularly



5

Number of SAC/Parent Advisory Group Meetings

● Meeting Target

● Not Meeting Target

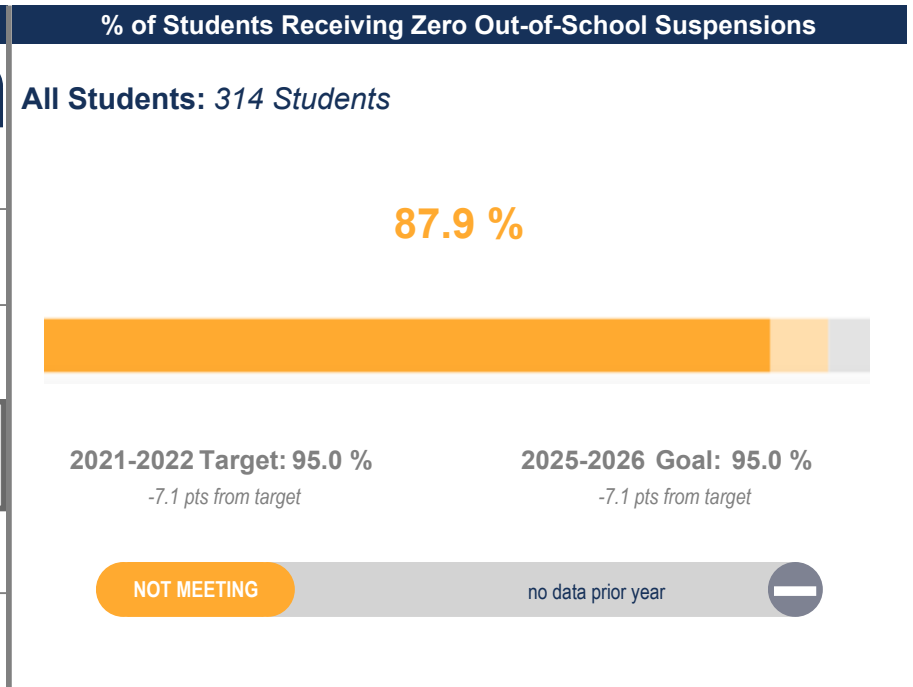
# Climate, Culture & Opportunity

## Guardrail 4 - Addressing Racist Practices

School Code | 4240 School Name | Lewis C. Cassidy Academics Plus School

**Guardrail 4:** Our students' potential will not be limited by practices that perpetuate systemic racism and hinder student achievement.

Suspension Disproportionality			
	% of Enrollment (Total Enrollment)		% of Suspensions Given to Each Subgroup
All Students	(262)		
American Indian / Alaskan Native	0.4 %	(1)	0.0 %
Asian	0.0 %	(0)	0.0 %
Black / African American	90.1 %	(236)	98.0 %
Hispanic / Latino	6.1 %	(16)	2.0 %
Multi Racial / Other	2.3 %	(6)	0.0 %
Native Hawaiian / Pacific Islander	0.0 %	(0)	0.0 %
White	1.2 %	(3)	0.0 %
English Learners	6.5 %	(17)	5.9 %
Students with IEPs	21.8 %	(57)	11.8 %
Economically Disadvantaged	87.0 %	(228)	80.4 %



### % of Students Qualified to Attend Criteria-Based High Schools

All Students	Black / African American	Hispanic / Latino
30.0 %	Insufficient Sample	Insufficient Sample

- Meeting Target
- Not Meeting Target